

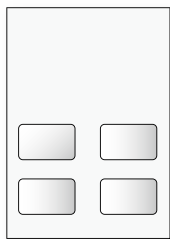
persoMail

Card Mailing End-to-End System Solution



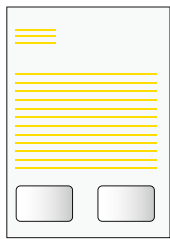
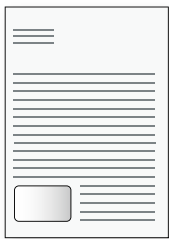
Flexibility for Higher Efficiency in the Production Process

Increase the efficiency of your processes and save time by increasing job sizes. In order to put this into practice, they offer a variety of extremely versatile possibilities. Both the cards and the documents are read and matched with the hosted database file before inserting. The carrier will be printed and the card will be labeled and attached before feeding into the envelope.



Selective Number of Cards

Up to four cards can be drawn off and attached to each document. The number of cards can vary from mailpiece to mailpiece within a single job.



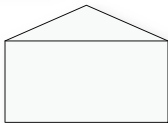
Individual Contents and Layouts

Both standardized elements as well as customized ones for each specific recipient can be printed on each individual document. The text blocks can be positioned so that they fit to the layout of the pre-printed form and the position of the card. For the layout of the document Microsoft Word is used.



Variable Number of Pages per Mailing

If desired, multiple pages can be assembled after folding.



Selective Enclosure Feeding

Enclosures may be added selectively to each mailing.

Highest Possible Integrity

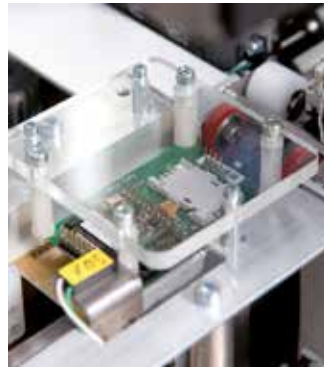
Both, the cards and the documents, are read and matched before inserting. The dependable error handling diverts incorrect cards and documents and, if necessary, stops the system in the event of incomplete mailings. This ensures that each customer receives the right card(s) on the right document.

Additionally there are features included ensuring a high level of quality. After closing the envelope the address can be read once more and the particular mail can be weighed. This information in combination with the process control of the card attachment guarantees the highest level of integrity.



Card Feeding

- 1-4 feeder magazines with up to 500 flat cards per magazine
- Flat and embossed cards
- ISO 7810 ID-1 and Visa Mini and MC²
- Electronic controlled selective feeding according to job configuration
- Magazines are exchangeable with all PERSONMASTER personalization systems



Card Reading

- LoCo and HiCo magnetic stripe reader for all three tracks in parallel without changing of reading heads
- Chip reading by contact for T0, T1 and other common protocols
- Contactless chip reading according ISO 14443 A/B, Mifare; other interfaces on request
- Support of common reading techniques for 1D/2D barcodes and optical character recognition

Carrier Print Preparation

- Microsoft Word based carrier printing
- Data base formats: xls, dbf, csv, mdb, txt
- Flexible use of fixed text elements and individual personalized data and graphics for every document
- Barcode engine



Card Channel

- Label application with wide range of supported materials (transparent, black marking)
- Buffer unit to obtain the machine throughput
- Card reject for non processable cards



Carrier Feeding

- Printer black-and-white or color
- Supported paper formats: A4 and US letter as well as A5 and B5
- Cut sheet support for simple applications with preprinted carriers

Carrier Reading

- Carrier detection after printing for correct matching with the cards to be attached
- Support of common reading techniques for 1D/2D barcodes



Carrier Channel

- Card affixing with double-sided adhesive labels
- 1-4 cards per carrier
- Carrier reject



Insert Feeder

- Selective enclosure feeding
- Up to six inserts

Insert Envelope

- All conventional types of folds are supported: Z-, C- and V-fold
- Variable number of pages per mailing



Quality Process Control

- Logical control of match of card(s) to carrier
- Ultrasonic sensor for checking the presence of attached cards and labels
- Double sheet detection
- Reading of the address field of the inserted carrier through the envelope window
- Weighing of finished envelope after leaving the inserting machine



Machine Control and Production

- Modern graphical user interface using uniform Atlantic Zeiser software platform for a homogenous appearance for all Atlantic Zeiser products
- Control and production software based on Microsoft Windows 7 operating system
- Easy job configuration
- Reporting functionality



persoMail

Advantage

Versatile, compact and cost efficient – that's the PERSOMAIL, the solution for automated card mailing in the middle performance segment. It combines the greatest versatility of application and absolute processing security for various mailing applications or can be used as a backup for existing high-performance systems. The system is particularly convincing when it comes to flexibility. Furthermore it offers reliable processing and easy operation. The modular system concept enables individual tailoring for a broad spectrum of customer applications.

Inserting Options

Different system configurations are offered which can be employed depending on the customer's requirements. The individual modules for folding, enclosure feeding and inserting can be configured individually in order to meet the demands of the customer. The folding unit can execute all conventional types of folds. The fold type can be changed when switching from job to job, without the need for mechanical interventions.

A flexibly configurable number of feeders enable the selective feeding of a variety of enclosures. In cascade operation, operator interventions for reloading the enclosures are minimized, as the material can be taken from the next tray when the first one is empty. The PERSOMAIL guarantees the greatest possible integrity of the documents and cards which are processed into ready-to-send mail pieces.

persoMail

Your Competitive Edge

- Variable processing speeds up to 3000 cards/hr
- Selective card feeder for more feeding option
- Online carrier printing guarantees unique layouts
- Improved buffer for cards and carrier
- Easy to use by uniform modern graphical user interface based on latest ergonomic knowledge
- Full data integrity
- Integration of high speed verification system VERICAM E
- Various contact and contactless card reading possibilities (Magnetic stripe, 1D and 2D barcodes, OCR)
- Different folding options (V, C, Z)
- Up to six additional inserts for booklet mailings
- Selective enclosure feeding increases versatility of applications
- Plug & Play unit replacement for easy and quick service and maintenance operation
- High level of investment protection by modular machine concept for customization and adaption for additional requirements for new business opportunities
- Smart Software monitors and controls the current processing status of cards, their corresponding documents and compiles automatically comprehensive reports and statistics. The print preparation software is open to several database formats.

Technical Specifications PERSOMAIL	
System Facts	
Throughput	Up to 3000 cards/hr
Card Feeding	
Card Format Magazine Capacity	ISO 7810 ID-1, Visa Mini MC ² Up to 500 flat cards; embossed: less
Card Reading	
Chip Magnetic Stripe Barcode Text OCR	Contact/contactless HiCo/LoCo 1D/2D Plain text OCR A/B
Carrier Reading	
Barcode	1D/2D
Paper Feeding	
Paper Format Form Draw-off	DIN A4, A5, B5 and US letter Form printer paper trays (selective)
Card Attaching	
Method Amount of Cards Card Positions	Double-sided self-adhesive labels Up to 4 per carrier (selective) Difinable
Paper Processing	
Folding Assembling after Folding	Z-fold, C-fold (wrap-fold), V-fold (half-fold) Up to 4 pages
Enclosure Feeding	
Thickness Number of Enclosure Feeders Enclosures per Mailpiece	Up to 4 mm Up to 6 Up to 6 (selective)
Inserting	
Envelope Size Filling Thickness	DIN C6/5 Up to 6 mm
Software	
Operating System	Windows 7
Quality Control	
Card Attachment Card and Carrier Inserting	Ultrasonic sensor for presence check of double-sided self-adhesive label between card and carrier Weighing of finished envelope Reading of inserted carrier through envelope window

ATLANTIC ZEISER Germany · Bogenstrasse 6-8 · 78576 Emmingen · Phone +49 7465 291-0 · Fax +49 7465 291-166 · sales@atlanticzeiser.com

ATLANTIC ZEISER Americas · 15 Patton Drive West Caldwell · New Jersey 07006 · Phone +1 973 228-0800 · Fax +1 973 228-9064 · sales@atlanticzeiserUSA.com

ATLANTIC ZEISER GB · 53 Central Way · Andover, Hants. SP10 5AN · Phone +44 1264 324-222 · Fax +44 1264 324-333 · sales@atlanticzeiserUK.com

ATLANTIC ZEISER Italy · Via Varesina 174 · 20156 Milano · Phone +39 02 33497740 · Fax +39 02 33401413 · azsr11983@atlanticzeiser.it

ATLANTIC ZEISER France · 1 rue du Bulloz · PAE des Glaisins · 74940 Annecy le Vieux · Phone +33 4 50 23 95 65 · Fax +33 4 50 23 95 81 · info@atlanticzeiser.fr

ATLANTIC ZEISER South East Asia · No. 7, Jalan Equine 1G · Pusat Komersil Equine, Taman Equine · 43300 Seri Kembangan, Selangor – Malaysia · Phone +60 3 8959 9107 · sales@atlanticzeiser-asia.com

ATLANTIC ZEISER China · Room 5183, 51F Raffles City Centre, 268 Xizang Middle Road, Huangpu District, Shanghai P.R. China 200001 · Phone +86 21 2312 7568 · sales@atlanticzeiser.com